

**FIRE ALARM SYSTEM** to BS5839-1:2017 Classification L1. L1 classification includes automatic fire detection in all rooms, on all escape routes and in all voids over 800mm in height. Sounders positioned throughout the building to achieve a minimum of 65dB(A) throughout the building. In areas of high ambient noise sound levels the fire alarm sound levels should be 5dB(A) above the normal noise level although not exceeding 120dB(A). Heat detectors indicated thus: **(HD)** and smoke detection indicated thus: **(SD)** to be installed where shown and are to be linked to the fire alarm system. All detectors to include integral bell sounders. Emergency escape lighting indicated thus: **(EL)** to the areas shown, being fed by a source independent of the main electrical supply. The system shall be 'Maintained' type and comply with BS 5266-1: 2016.

Break glass call points denoted thus: **(P)** Sounders denoted thus: **(S)**  
**ALL NEW DETECTORS TO BE WIRED BACK TO LANDLORDS FAP IN ACCORDANCE WITH FIT OUT SPECIFICATION DOCUMENT AND LANDLORDS REQUIREMENTS, TBC AT PRE-START BY PM**  
**FIRE FIGHTING EQUIPMENT**  
 All equipment is to be hung on wall brackets mounted 1m above floor level.

- Fire equipment indicated thus:
- (P)** 6.0Ltr FOAM type fire extinguisher.
  - (CO)** 2kg carbon dioxide type fire extinguisher.
  - (FB)** 1.0 x 1.0m fire blanket.
- All fire fighting equipment shall comply with BS 5306.

**NOTICES AND SIGNS ETC.**  
 Provide and fix the following notices to doors where indicated. Signs to comply with the requirements of BS 5499. In accordance with BS 5499, make sure the fire exit sign is displayed immediately above the exit opening or, if this is not possible, choose a position where the sign can be clearly seen and is least likely to be obstructed or obscured by smoke.

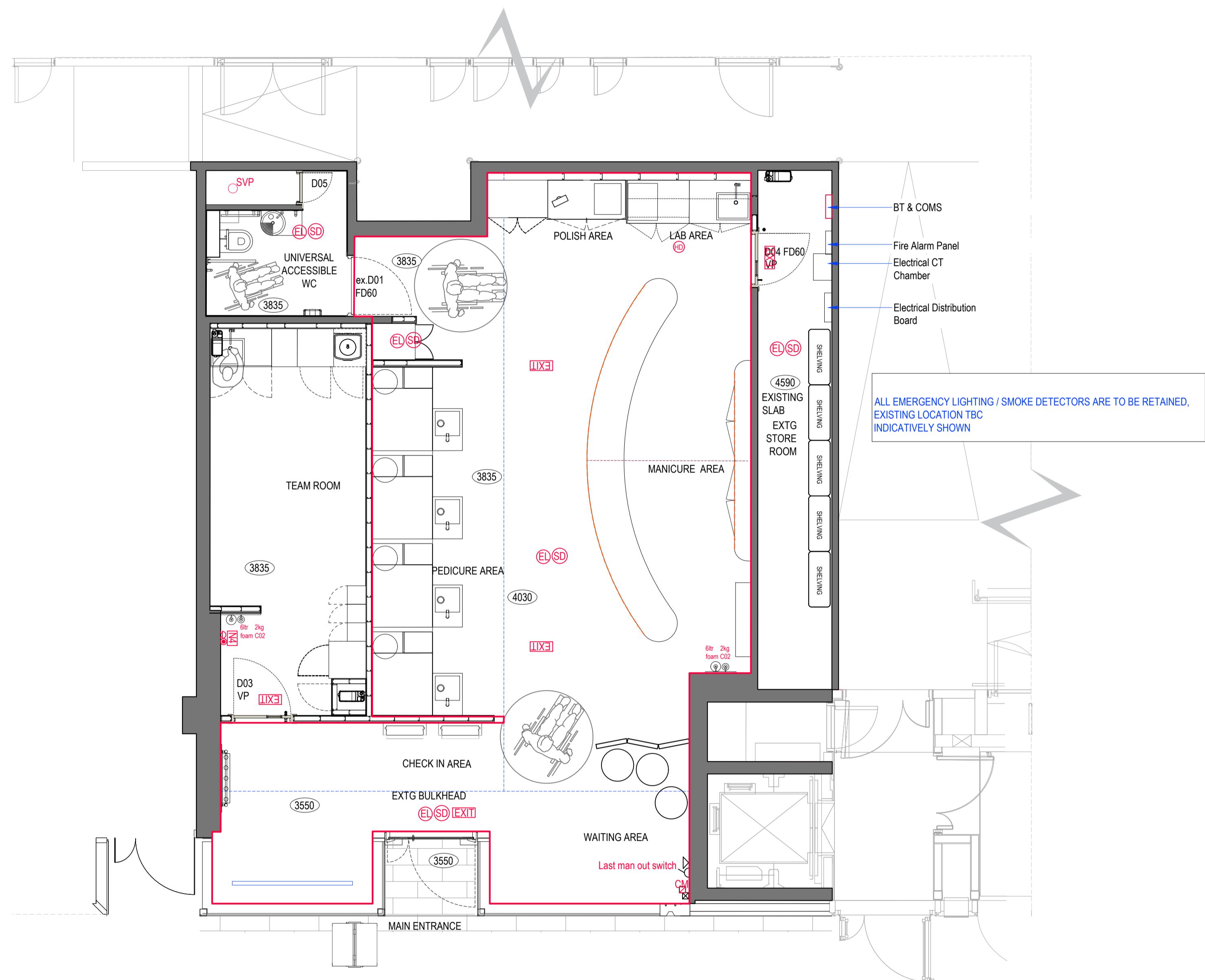
- (N1)** Fire door keep shut.
- (N2)** Fire door keep locked when not in use.
- (N3)** Fire exit - Keep Clear
- (N4)** Staff Fire Notice

**SURFACE FINISHES TO WALLS**

The surface finish in the premises should not fall below the following standards:-  
 A) Means of escape routes - Class O as defined in Appendix A of approved document B of the Building Regulations 2018 or up to B-s3 when tested to EN 13501-1  
 B) All other areas not classed as escape routes up to Class 1 as defined in Appendix A of approved document B of the Building Regulations 2018 or up to C-s3 when tested to EN 13501-1  
 C) In any small room of no more than 30m<sup>2</sup> up to Class 3 as defined in Appendix A of approved document B of the Building Regulations 2018 or up to D-s3 when tested to EN 13501-1  
**DECORATIVE TIMBER PANELING - WALL & CEILING.** If over 60m<sup>2</sup> will need to be pre-finished with envirograph pre-treatment to achieve a 1 hour fire protection. This applies to wall and ceiling finishes only. Fixed seating / counter / multidecks and free standing balustrades should not be included in this area calculation. Dado paneling and skirting / architraves should also be omitted.

**FURNITURE AND FURNISHINGS - FLAMMABILITY**  
 a) New upholstered seating furniture should satisfy as a minimum standard, the cigarette and match ignitability tests specified in British standard 5852; pt. 1 Fire Tests for Furniture - Methods for the ignitability by smokers' Materials of Upholstered Composites for Seating' and the crib ignition source of British Standard 5852; pt. 2 - Fire Tests for Furniture - Methods of Test for the Ignitability of Upholstered Composites for Testing by Flame source.  
 c) Water soak test. Any fabric which has received a flame retardant treatment should be subjected to a water soak test detailed in BS 5651.

**DOORS**  
 Fire officers requirements - Doors indicated FD30S shall be resistance to both collapse and passage of flame for 30 minutes. Doors to be self closing fitted with a CE marked power 3 door closer to BS EN 1154:1997. Door frames shall have 12mm rebated door stops and are to be fitted with a combined intumescent smoke seal. Alternatively where door frames are to be retained, remove existing door stops and provide and fix new 25x35mm softwood door stops, fixed to lining using 30N & screws at 150mm centres and insert intumescent seal into edges of door. Where required to be self-closing, closing system to be operated using a force not more than 30N at the leading edge from 0° (the door in the closed position) to 30° open, and not more than 22.5N at the leading edge from 30° to 60° of the opening cycle. Doors indicated FD60S, refer to wall types. Doors indicated VP shall include a vision panel of area not exceeding 1200mm<sup>2</sup>, comprising 6mm thick Georgian wired cast or polished glass bedded in an intumescent glazing compound and fixed into position using hardwood beads and brass screws and cups. Doors indicated PB shall be provided with panic bolts together with a sign 'PUSH BAR TO OPEN' in 100mm white block capitals on a green background, displayed above the operating mechanism to BS EN 1125



- NOTICES**
- (N1)** Fire door keep shut
  - (N2)** Fire door keep locked when not in use
  - (N3)** Fire exit - keep clear
  - (N4)** Staff fire notice
- DOORS**
- FD30s** Resistance to both collapse & passage of flame for 30 mins
  - FD60s** Resistance to both collapse & passage of flame for 60 mins
  - VP** Doors with vision panel
  - PB** Doors with panic bolts & 'push bar to open' sign
- EXTINGUISHERS**
- (P)** 2no fire extinguishers
  - (CO)** 2no fire extinguishers
  - (EL)** Emergency escape lighting
  - (HD)** Heat detector
  - (SD)** Smoke detector
  - (N1)** Break glass call point & sounder
  - (EXIT)** Fire Exit sign

<b>SEA DESIGN GROUP</b>	
Client	<b>TOWNHOUSE</b>
Project	Chancery Lane, Unit 10
Drawing Title	Licensing Plan
Scheme	TOWNHOUSE
Scale	1:20@A1
Date	14.04.23
Dwg No	223052/13
Dwg By	BYJ
Check	SJ
Revisions	By
SEA DESIGN GROUP Unit 130 Princes Drive, Kenilworth, Warwickshire, CV8 2FD UK Email: offices@seadesigngroup.com Telephone +44 (0)1926 864440	